

Rumble in the Jungle

Designed by Bethany Fuller
Featuring the Rumble collection by Whistler Studios
Size: 44" x 50"



Check www.windhamfabrics.com Free Project section to see if there are any pattern updates before you start your quilt project



812 Jersey Ave ~ Jersey City, NJ 07310 ~ 201.659.0444 ~ FAX: 201.659.9719
www.windhamfabrics.com email: retail@windhamfabrics.com

Rumble in the Jungle

Page 2



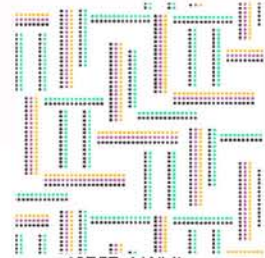
40754-X Multi



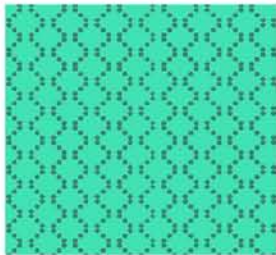
40755-X Multi



40758-3 Lavender



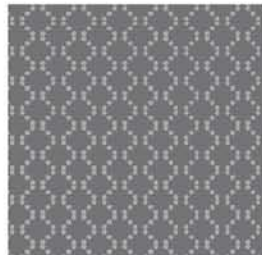
40757-4 White



40759-5 Green



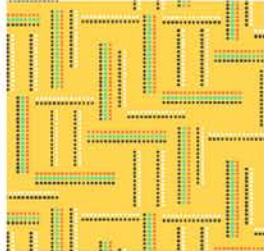
40758-1 Yellow



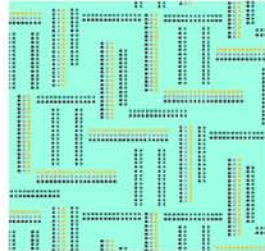
40759-8 Grey



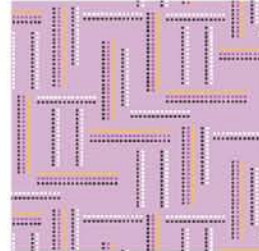
40759-6 Purple



40757-1 Yellow



40757-2 Mint



40757-3 Lavender

Focus Print (40754-X) 1 1/8 yds
Gray Lion Print (40755-X) 1/3yd
Gray Print (40759-8) 1/4 yd
Medium Purple Print (40758-3) 1/4yd
Background (40757-4) 5/8yd
Various Prints (40757-1,2 & 3) Fat 1/8s
Light Yellow Print (40758-1) 1/2 yd
Dark Turquoise Print (40759-5) 1/2 yd
Dark Purple Print (40759-6) 1/2 yd
Backing 3 1/8 yds



WINDHAM FABRICS

Rumble in the Jungle

Page 3

Cutting Instructions

From the Focus Print (40754-X) cut:

2 – 4 ½" LENGTHWISE strips, cut to 36 ½" long

1 - 9 ½" LENGTHWISE strip, cut to 36 ½" long

From the Gray Lion Print (40755-X) cut 2 - 4 ½" strips

From the Gray Print (40759-8) cut:

2 – 2" strips

2 – 1 ½" strips, cut both strips to 36 ½" long

From the Medium Purple Print (40758-3) cut:

2 – 2" strips

1 – 4 ¼" strip; cut into 4 – 4 ¼" squares, then cut diagonally twice

From the Background Print (40757-4) cut:

3 – 3 7/8" strips, cut into 24 – 3 7/8" squares, then cut diagonally once

4 – 1 ½" strips for Border 1

From EACH of the Various Prints (40757-1,2&3) cut:

4 – 4 ¼" squares, then cut diagonally twice

From the Light Yellow Print (40758-1) cut:

1 – 4 ¼" strip; cut into 4 – 4 ¼" squares, then cut diagonally twice

5 – 1 ¾" strips for Border 2

From the Dark Turquoise Print (40759-5) cut:

1 – 4 ¼" strip; cut into 4 – 4 ¼" squares, then cut diagonally twice

5 – 2" strips for Border 3

From the Dark Purple Print (40759-6) cut

5 – 2 ½" strips for Binding



WINDHAM FABRICS

Rumble in the Jungle

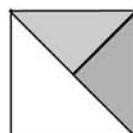
Page 4

Piecing Instructions

Sew two yellow triangles together, once of each print.



Sew to a Background triangle to make a square.



Sew 4 of these units together to make a pinwheel.

Make 4 blocks of each color.

Sew these blocks together into 2 rows of 6 with blocks in random placement.

Sew a Gray Print and Medium Purple Print strip together along the long sides. Sub-cut into 24 – 2” sections.



Sew end to end to make 2 rows of 24 squares each.

Sew quilt elements together according to the cover photo.

Measure finished quilt center carefully. Add inner border according to measurements. Repeat process for all borders.

Quilt, bind and enjoy!

**Be sure to visit www.windhamfabrics.com to see the complete collection
and to download this and other Free Projects**